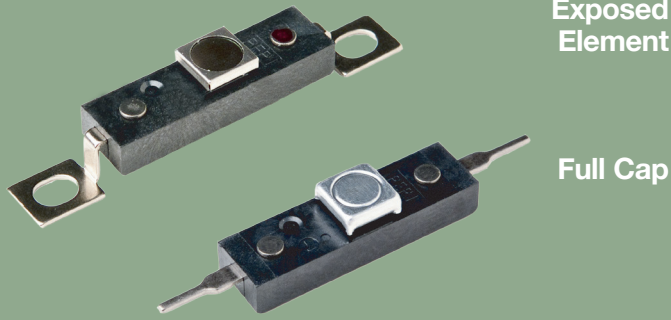


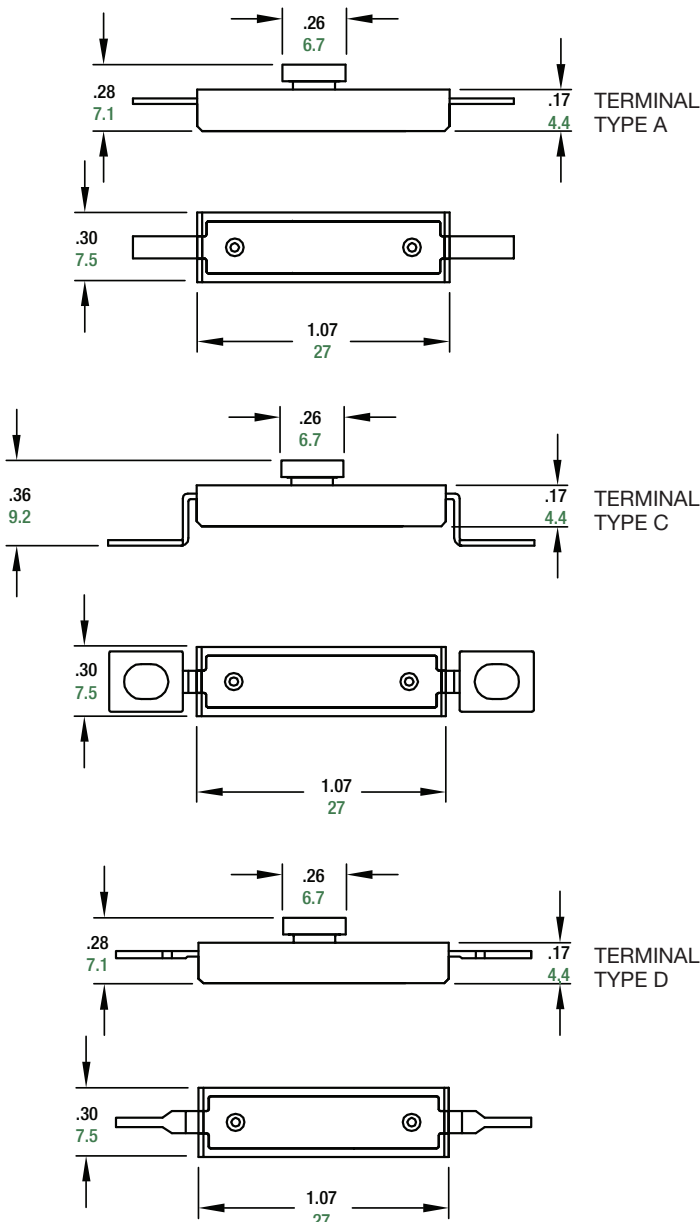
SINGLE OPERATION THERMOSTATS



Exposed Element

Full Cap

METRIC DIMENSIONS ARE IN MM (SHOWN IN GREEN)



Model H-5

These Snap Action Thermal Controls operate as a high limit, single operation (non-resettable) type control. These unique devices have a phenolic resin case which isolates them from the electrical circuit. As single operation thermostats they perform like a thermal fuse with the reliability of a 100% tested bimetallic thermal control.

FEATURES

- Snap action devices; quick make/quick break switching action.
- Single Operation type devices. Reset temperature is less than -35°C . This prevents the thermostat from resetting under normal operating conditions.
- Unique positioning of the bi-metallic element allows for excellent heat transfer for improved reaction time.
- Available with exposed bi-metallic elements for even faster thermal response.
- Phenolic resin case isolates devices from the electrical circuit and is suitable for use in high temperature applications.
- Can be mounted directly on a heated surface.
- Preset calibration temperature, not adjustable in the field.
- Opposite end termination allows for flexibility of installation.
- Factory installed lead wires or terminals available – Consult Factory.

CONTACT RATINGS

- 15 amps / 250V AC (resistive)

CERTIFICATIONS

- CUL, VDE, TUV

CALIBRATION TEMPERATURE RANGE

- Available with nominal calibration temperatures from 130°C to 240°C .

APPLICATIONS

Almost anywhere ultimate safety is required. Included are laser printers, fax machines, copiers and many small appliances.

We come through when the heat is on®



Pepi®

Portage Electric Products, Inc.