

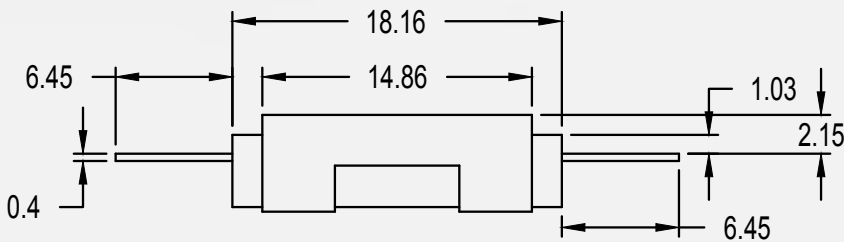
A Snap Action Thermal Protector specifically designed for DC voltage applications. This miniature device operates as a high limit single operation (non-resettable) type control. It is constructed with a phenolic resin case which isolates it from the electrical circuit.

MODEL H SERIES

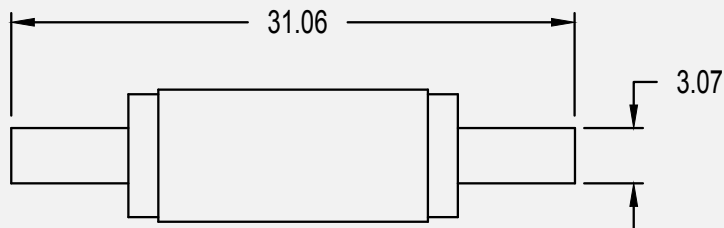


MODEL H

SIDE VIEW



TOP VIEW



METRIC DIMENSIONS ARE IN MM (SHOWN IN GREEN)

Copyright 2006, Portage Electric Products, Incorporated, all right reserved

FEATURES

- Snap action device; quick make/quick break switching action.
- Single operation type device. The reset temperature is less than -35°C . This prevents the thermostat from resetting under normal operating conditions.
- Unique construction provides for fast thermal response.
- Phenolic resin case isolates the device from the electrical circuit and is suitable for use in high temperature applications.
- Can be mounted directly on a heated surface.
- Preset calibration temperature, not adjustable in the field.
- Opposite end termination allows for flexibility of installation.
- Factory Installed lead wires or terminals available -Consult Factory.

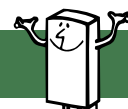
CONTACT RATINGS

- 1 amps/36V DC (resistive)
- CUL, TUV, VDE

CALIBRATION TEMPERATURE RANGE

- Available with nominal calibration temperatures from 160°C to 220°C .

We come through when the heat is on™



Pepi®

Portage Electric Products, Inc.