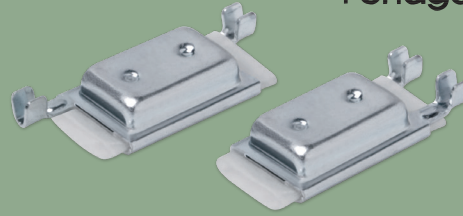




VALSTAT™ SERIES



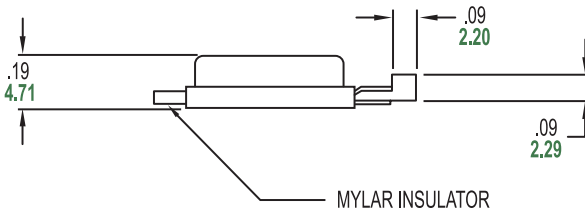
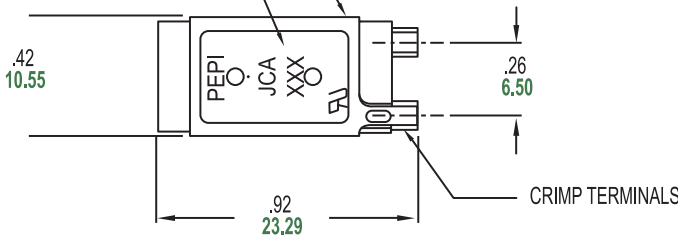
Model J(C) Series

METRIC DIMENSIONS ARE IN MM (SHOWN IN GREEN)

Model JCA

MODEL JCA THERMAL PROTECTOR

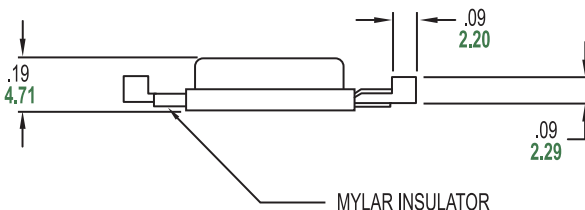
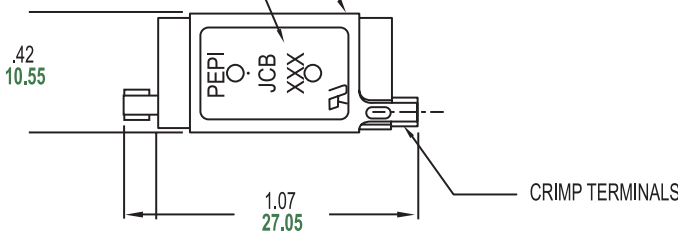
CALIBRATION TEMPERATURE



Model JCB

MODEL JCB THERMAL PROTECTOR

CALIBRATION TEMPERATURE



Portage Electric Products is offering a new series of economical snap action thermal protectors designed for a cost effective solution for protection in motor, transformer and lighting applications. Available with various bimetallic elements to match the current sensitivity of the device to the application.

FEATURES

- Snap action device, quick break/quick make switching action.
- Conductive bimetal construction: The bimetallic element carries the circuit current for maximum sensitivity under short circuit conditions.
- Available in two bimetallic resistance values.
- Preset calibration, not field adjustable.
- Available with same end termination (JCA) opposite end termination (JCB).
- Gasketed zinc plated steel case suitable for many varnish impregnation processes.
- Case electrically live, insulating sleeving is available.
- Various leads and terminations available including nickel strip for Ni Cad battery packs.

CONTACT RATINGS

- 16 VDC/20 AMPS
 - 115 VAC/22 AMPS Inductive
 - 250 VAC/8 AMPS Inductive
- These ratings are applicable for 6,000 cycles*
- UL & C-UL File No. E42562
UL 2111 Standard and CSA C22.2 No. 77-95
 - UL & C-UL File No. E37151
UL 873 Standard and CSA C22.2 No. 24-93

CALIBRATION TEMPERATURE RANGE

- 50°C TO 150°C
Standard Tolerance $\pm 5^\circ\text{C}$

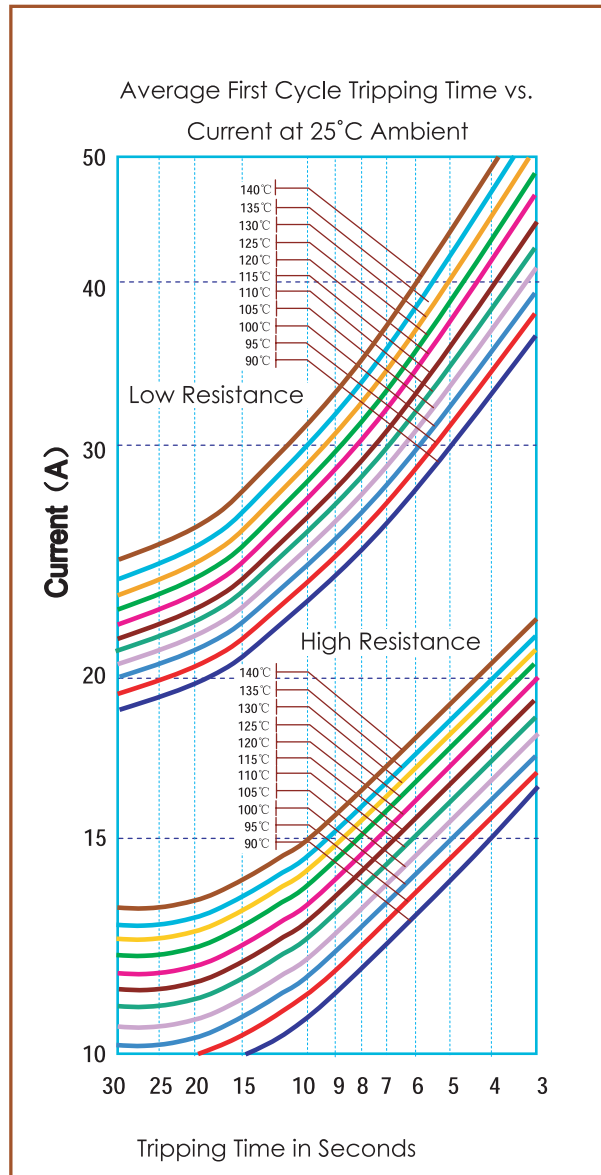
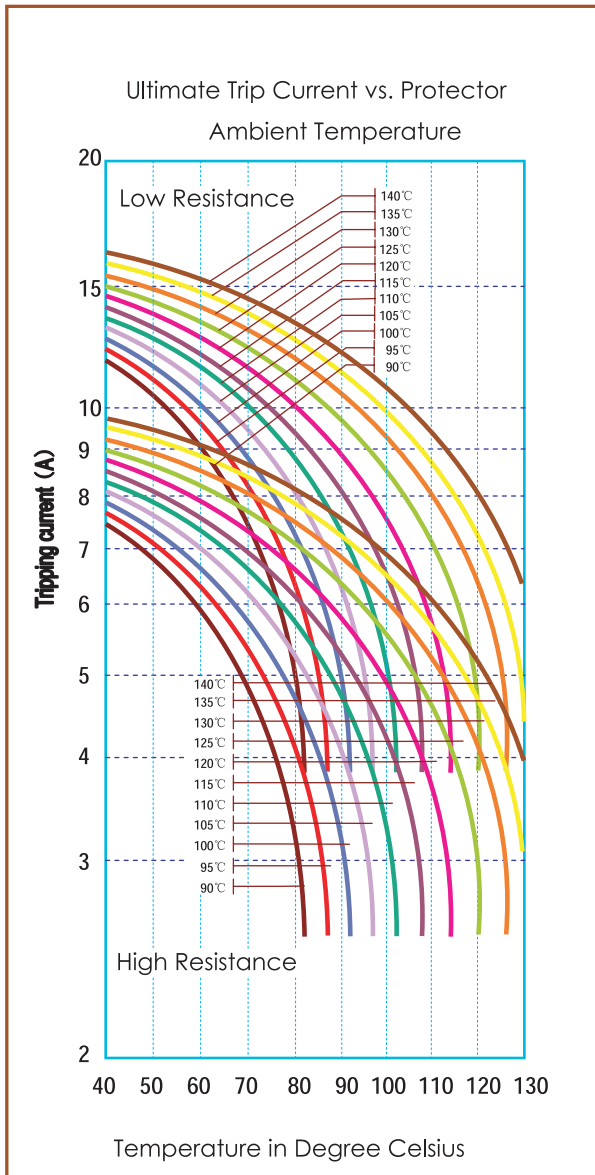
ORDERING INFORMATION

Model JCA – XXX radial connection (same side)
Temperature setting:
50°C-150°C

Model JCB-XXX axial connection (opposite side)
Temperature setting:
50°C- 150°C

Insulating sleeves available along with various lead materials and terminations. Call factory for options.

Pepi Model J(C)



Portage Electric Products, Inc. The Thermal Control Specialists

This sheet contains basic technical and operating characteristic data for our Model J(C) Series. We have presented this data in such fashion, to attempt to provide necessary information for all of the various markets which we serve.

Should you have any questions regarding the use of our Model J(C) devices in your application, please feel free to contact us for additional technical information or assistance.

Since 1963, Portage Electric Products, Inc., has been a world-wide supplier of bimetallic thermostats and thermal protectors. Today, we produce a wide variety of creep-action and snap-action devices for use in motors, transformers and converters, rechargeable battery packs, small and personal care appliances and many other OEM applications.

We come through when the heat is on®



Pepi®

Portage Electric Products, Inc.

Copyright 2005, Portage Electric Products, Incorporated, all right reserved

7700 Freedom Ave. NW, P.O. Box 2170, North Canton, Ohio 44720, U.S.A.

Phone: (330) 499-2727 • 1-888-G04-PEPI • FAX (330) 499-1853 • e-mail: salesinfo@pepiusa.com • www.pepiusa.com